

Technical Datasheet



LEVEL GAUGE

Glass tube type

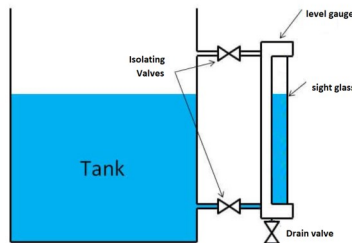
Models: GLG

Key Features

- Simple and reliable for use on steam and process applications.
- Supplied complete with shut off valves.
- Handle positions left or right.
- Easy and cheap solutions.
- A borosilicate crystal type.
- Suitable for clear liquids and water.

Series Overview

Glass tube type level gauge, is the simplest device to read a level inside a tank. It work as a window enabling operator to observe processes inside tanks, pipes, reactors or vessels. The type of glass used in the manufacturing of our sight glasses is borosilicate glass, and the valves body could be either made from carbon Steel or Stainless Steel.

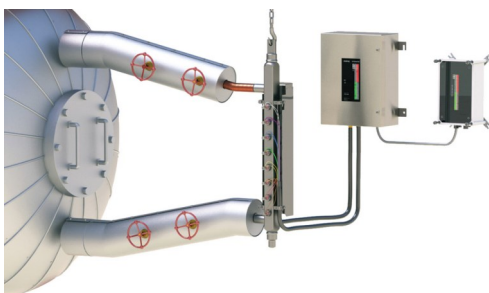


This kind of crystal makes the level gauge good for aggressive fluids or steam, since protective a mica sheet can be installed between the fluid and the glass. The biggest advantage of this type of gauge is the very low cost and the isolating valves allowing easy maintenance.

Other products

Other products in the series include:

- Conductive type, Hydrastep level control
- Reflex level gauge



Product applications

Our Level Gauges are suitable for a wide range of applications in:

- Oil & Gas
- Chemical
- Petrochemical
- Refining
- Power

The choice of options ensures that the Glass type level gauges series is suitable for use in:

- Boilers
- Resistant to chemical attack

How can we help you?

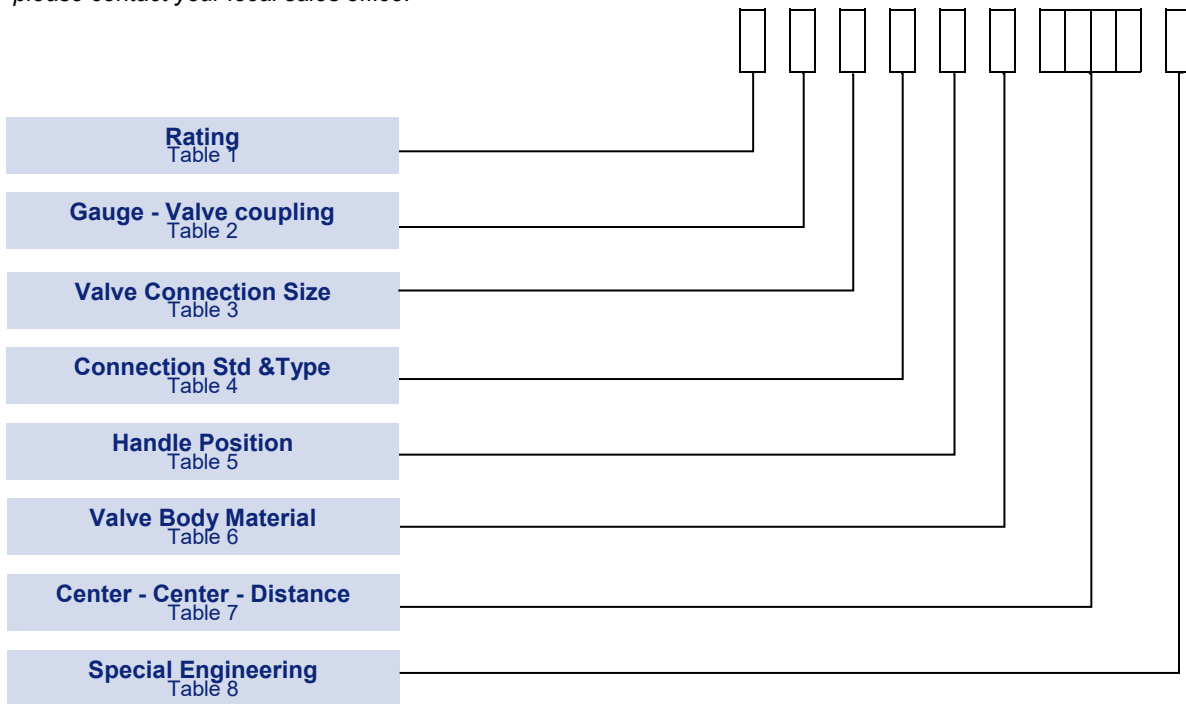
Delta Mobrey offers fast, efficient and knowledgeable support when and where you need it. Please visit our website at www.delta-mobrey.com to find your local support centre or call us on:

+44 (0) 1252 729140

Glass Type Level Gauge
Models: GLG

How to order

Gauges can be configured by selecting codes representing the desired features from the tables that follow. The chart below, describes how the model code is built up. For assistance in configuring a switch that best suits your needs, please contact your local sales office.



NOTE: The non-standard option code is shown by "X" in the part number. Should you require any clarification on these codes please contact your local sales office.

TO ENQUIRE ABOUT A QUOTATION FOR A LEVEL GAUGE, PLEASE SPECIFY:

- **TYPE OF FLUID**
- **OPERATING CONDITION (PRESSURE AND TEMPERATURE)**
- **REQUIRED FLANGE FACE FINISHING (RF/FF/RTJ)**
- **MATERIAL OF CONSTRUCTION**

Technical Specification

Glass Type Level Gauge

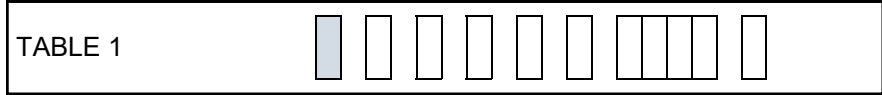
Models: GLG

Crystal
Resistance to pressure : 200 bar
Resistance to temperature : 300 °C
Reference Standards: DIN 7081 ; TGL 7210 ; BS 3463
Expansion coefficient: acc. to DIN 52328
Chilling strength: acc. to DIN ISO 718
Hydrolytic resistance: acc. to DIN ISO 719
Hydrolytic acid resistance: acc. to ISO 1776
Alkali resistance: acc. to DIN ISO 695

Dimension of the gauge:
 See drawing.
 Note : Max Center-Center distance for single glass tube = 3000mm
 For higher distance, multiple tubes are used, fitted with middle connection

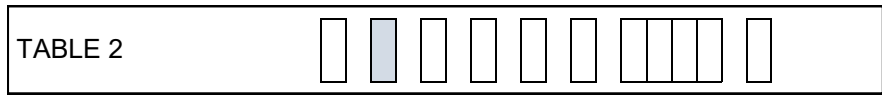
Body Material of upper/lower cock
 See table on drawing page:

Body Rating



Description	Code
Glass tube type Rating PN40	K

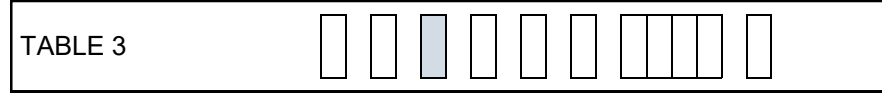
Gauge-Valve Coupling



NOTE:
Consider the construction
See table on drawings.

Description	Code
Type of connection between valves and gauge With end tubes and stuffing boxes.	B

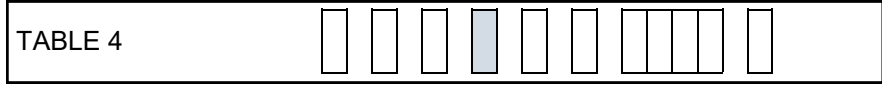
Valve Connection Size



NOTE:
Construction and dimensions of the
connection ANSI or DIN is defined by
the rating of the valve.
See table 5.

Description	Code
1/2" to ANSI B 16.5	D
3/4 " to ANSI B 16.5 or DN20 to BS4504	E
1" to ANSI B 16.5 or DN25 to BS4504	F

Connection Std &Type

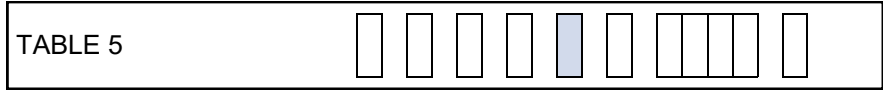


NOTE:
Standard flange finishing is **RF**.
Different mix or FF finishing are
available but on request as SPECIAL
ENGINEERING

Description	Code
150 lbs.	A
PN6	G
PN16	H
PN40	K
NPT MALE	N
NPT FEMALE	O
BSP MALE	P
BSP FEMALE	Q
SOCKET WELD	R
NON STANDARD	X

Handle Position

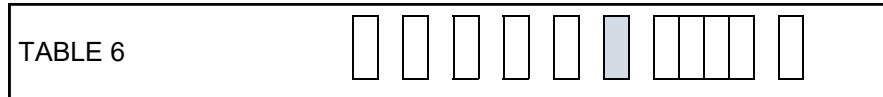
NOTE:
The handle of the valves can be settled to operate on the left or on the right.



	Code
Level cock Handle Position Right handle position.	1
Level cock Handle Position Left handle position.	2

Valve Body Material

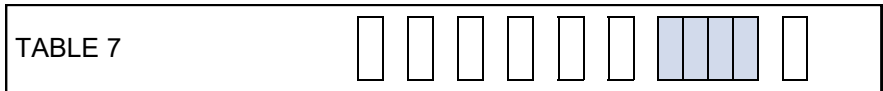
NOTE:
See drawing for the breakdown material of the cock valve.



Description	Code
Carbon Steel	H
Stainless Steel	B
Non standard	X

Center - Center Distance

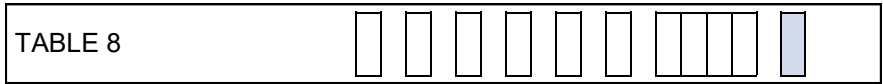
NOTE:
Refer to the drawings for all dimensions and visible length



Description	Code
Center - Center Distance Ax/Ay as shown in drawings (in mm)	XXXX

Special Engineering

NOTE:
Last 4 digits of model code are only used when special engineering is required.

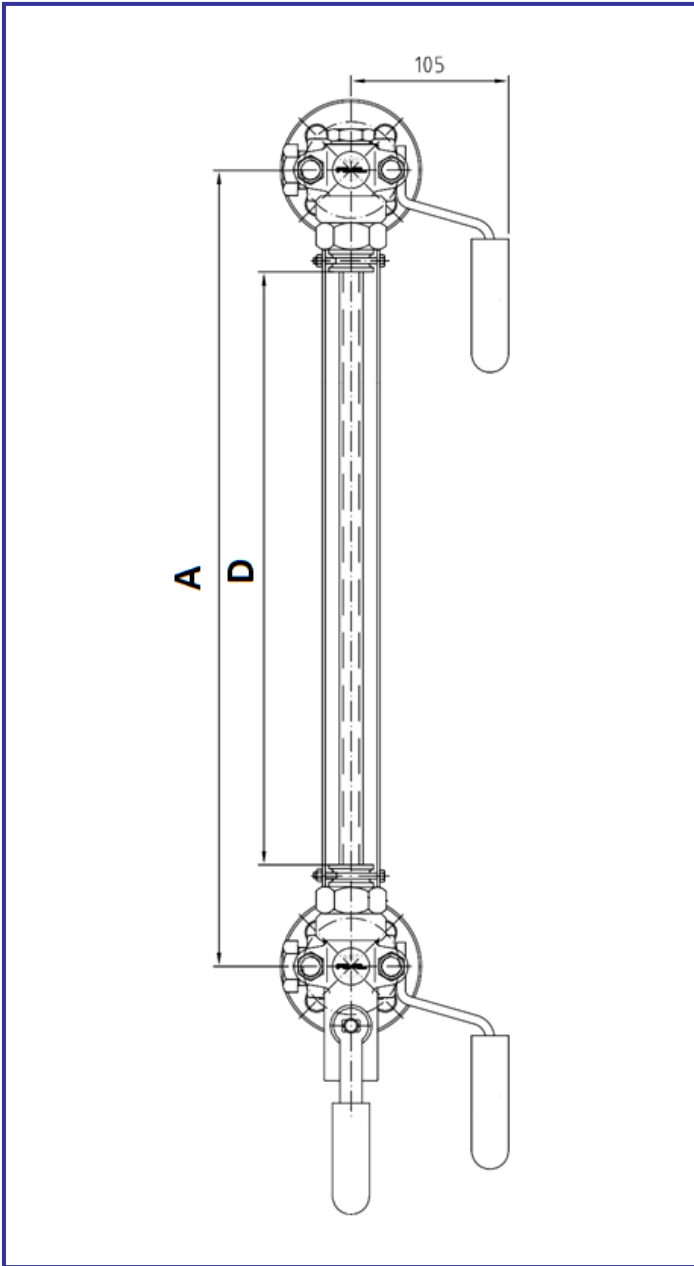


Description	Code
Bolt & Nuts In Stainless Steel B8/A4	
Please consult our sales engineering for special requirements	TBA

Dimensions

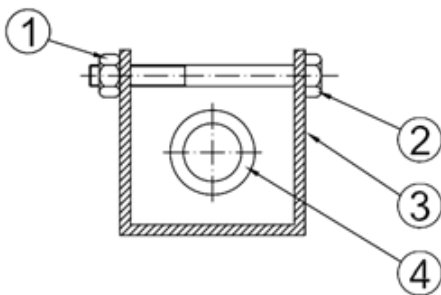
RATING PN10 = code H

All dimensions mm (inches)



Ax= center-center distance with end tubes and stuffing boxes.

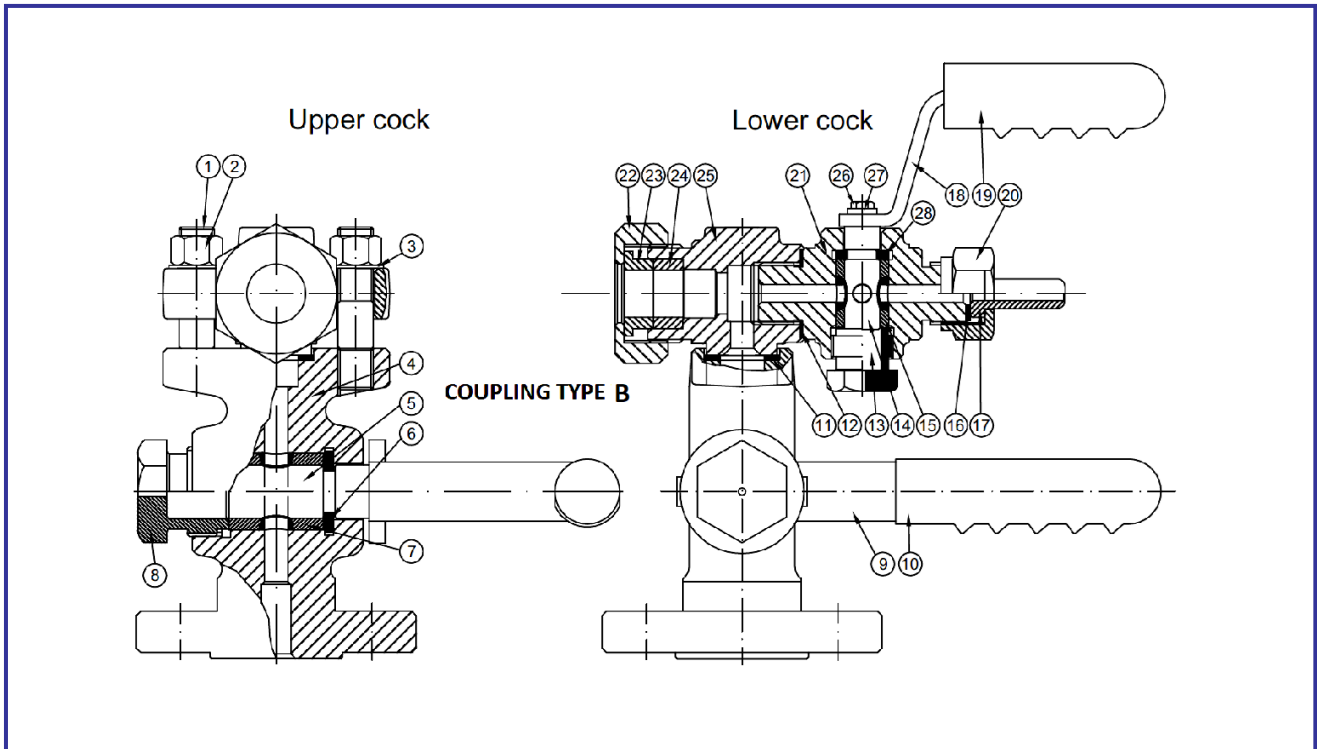
A_B (3000mm single tube)	D
Any length	Ax-20mm
Glass dimensions	Diam16x2.5mm



		A	B
1	Nut	ASTM A194 2H	Carbon steel
2	Bolt	ISO 898-1 8.8	Asbestos free
3	Protection tube	Zincd Iron	Borosilicate
4	Glass Tube	Borosilicate	Graphite
5	Gasket Glass/Valve	Rubber	Carbon Steel

Dimensions

All dimensions mm (inches)



	A	B
1 Bolts	ASTM A193 B7	ASTM A193 B8
2 Nut	ASTM A194 2H	DIN938 Gr.8
3 Washer	UNI 6592	F316L
4 Body	ASTM A105N	F316L
5 Plug F18	A316	A316
6 Ring F18	A316	A316
7 Packing Sleeves F18	Graphite	Grafite / Graphite
8 Stuffing box F18	ASTM A 105	ACC. INOX / S.steel
9 Big cock handle	ASTM A 105	Acc/C / C.steel
10 Big Cover Handle	Nylon 66	Nylon 66
11 Spirometallic	F316 / Graphite	F316 / Graphite
12 Ring Thickness	A316	A316
13 Stuffing box F12	ASTM A 105	Stainless Steel
14 Plug F12	A316	A316
15 Packing Sleeves F12	Graphite	Graphite
16 Gasket	Graphite	Graphite
17 Connection Type	ASTM A 105	S.Steel
18 Little cock handle	ASTM A 105	S.Steel
19 Little cover handle	Nylon 66	Nylon 66
20 Draincock cover	ASTM A 105	ACC. INOX / S.steel
21 Drain cock	ASTM A105N	F316
22 Connections cover	ASTM A 105	S.Steel
23 Stuffing box ring	ASTM A 105	S.Steel
24 Packing Sleeves F18	Graphite	Graphite
25 Stuffing box body	ASTM A105N	F316
26 Cap screw	UNI 5739	UNI 5739
27 Washer	UNI 6592	UNI 6592
28 Ring F12	A316	A316

In the interest of development and improvement Delta Mobrey Ltd, reserves the right to amend, without notice, details contained in this publication. No legal liability will be accepted by Delta Mobrey Ltd for any errors, omissions or amendments.

Delta Mobrey Limited

Hudson House, Albany Park Camberley Surrey, GU16 7PL, UK.

T+44 (0)1252 729140 F+44 (0)1252 729168 E sales@delta-mobrey.com W www.delta-mobrey.com

ISO9001



FM00720