

# Technical Datasheet



## Double C-Bourdon Tube Differential Pressure Gauges DB Range

### Key Features

- Nominal Diameter of 100 mm.
- Degree of Protection IP55/65/67.
- Stainless steel enclosure as standard.
- Ranges available between 1 and 60 bar.
- Accuracy class 1.6%.



### Technical Specification

#### Enclosure Casing

- Enclosure case and ring in AISI 304 stainless steel with bayonet bezel.
- Direct mounting.
- Optional surface mounting with 3-hole on request
- Optional back panel flush mounting with pegs on request
- Optional: AISI 316 available on request.

#### Enclosure Options

- IP67 Protection for dry or liquid filled execution.

#### Window

- Glass for dry execution.
- methacrylate for liquid filled execution.
- Optional: laminated safety glass on request.

#### Process Connection

- 1/4-18 NPT (1/4 NPT female).

#### Pressure Connection Material

- AISI 316L stainless steel as standard.

### Product applications

The DB range is suitable for a wide range of applications in:

- Oil & Gas
- Chemical
- Petrochemical
- Refining
- Power
- Marine

The choice of models available ensures suitability for use in:

- Corrosive atmospheres
- Resistant to chemical attack

### How can we help you?

Delta Controls' offers fast, efficient and knowledgeable support when and where you need it. Please visit our web site at [www.delta-controls.com](http://www.delta-controls.com) to find your local support centre or call us on:

**+44 (0) 1252 729140**

Double C-Bourdon Tube  
Models: DB range

## Technical Specification

### Pressure Element Material

- Double C-Bourdon tube stainless steel AISI 316L.
- Optional: Monel 400 available on request.

### Movement

- Stainless steel.

### Pressure Ranges

- 0 to 1; 0 to 1.6; 0 to 2.5; 0 to 4; 0 to 6; 0 to 10; 0 to 16; 0 to 25; 0 to 40; 0 to 60
- Other graduations not normalized for single or double range (on request)

### Unit of Pressure

- mbar, bar, kPa, kg/cm<sup>2</sup> and psi for single or double range.

### Static Pressure

- 2 x full scale value in one or both of the process connection.
- Optional: 3 x full scale value available on request.

### Dials

- White Aluminium with black graduation
- Scale on 270°

### Accuracy

- 1.6 as per EN 837-3

### Ambient Temperature

- -20 to +60°C

### Operating Temperature

- Max 120°C

### Pointer

- Micrometric adjustable, in Aluminium

## Optional Extras

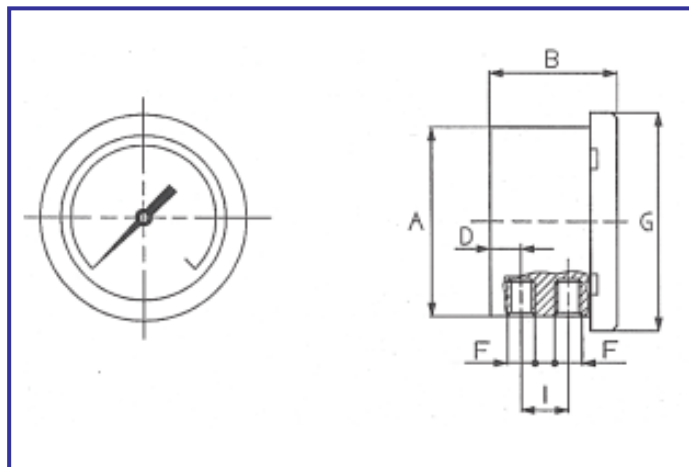
Degreasing for oxygen service

Metal tag plate, AISI 316 stainless steel tag number

2" pipe mounting bracket

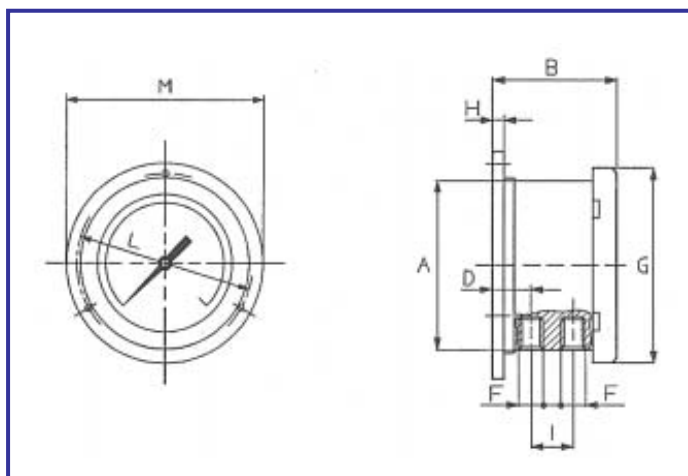
## Dimensions

All dimensions mm (inches)



DP gauge for direct mounting

DN	A	B	C	D	E	F	G	H	I	L	M	N	Weight (kg)	
													Dry	Filled
100	103	64		14		1/4	118		23				0.55	1.05



DP gauge for surface mounting with 3 fixing holes (120° apart)

DN	A	B	C	D	E	F	G	H	I	L	M	N	Hole Dia.	Weight (kg)	
														Dry	Filled
100	103	70		20		1/4	118	7	23	126	140		5	0.64	1.14

In the interest of development and improvement Delta Controls Ltd, reserves the right to amend, without notice, details contained in this publication. No legal liability will be accepted by Delta Controls Ltd for any errors, omissions or amendments.

### Delta Controls Limited

Riverside Business Park, Dogflud Way, Farnham, Surrey GU9 7SS, UK.

T+44 (0)1252 729140 F+44 (0)1252 729168 E sales@delta-controls.com W www.delta-controls.com

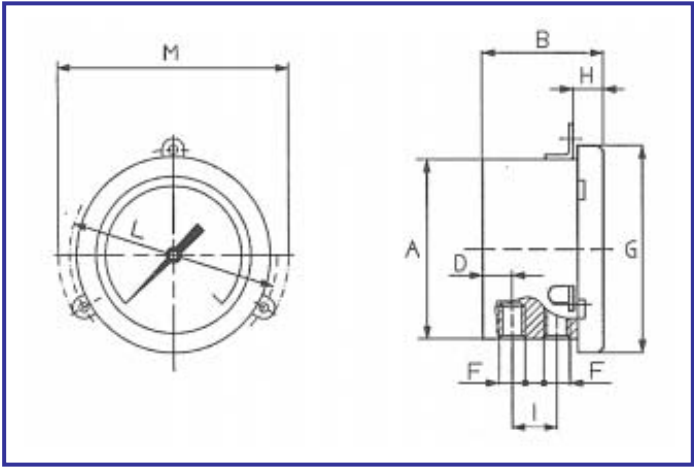


FM00720

Page 3 of 4

Dimensions

All dimensions mm (inches)



DP gauge for back panel flush mounting with pegs (120° apart)

DN	A	B	C	D	E	F	G	H	I	L	M	N	Hole Dia.	Weight (kg)	
														Dry	Filled
100	103	64		14		1/4	118	16	23	130	142.5		M5	0.57	1.07

In the interest of development and improvement Delta Controls Ltd, reserves the right to amend, without notice, details contained in this publication. No legal liability will be accepted by Delta Controls Ltd for any errors, omissions or amendments.

**Delta Controls Limited**  
Riverside Business Park, Dogflud Way, Farnham, Surrey GU9 7SS, UK.  
T+44 (0)1252 729140 F+44 (0)1252 729168 E sales@delta-controls.com W www.delta-controls.com

